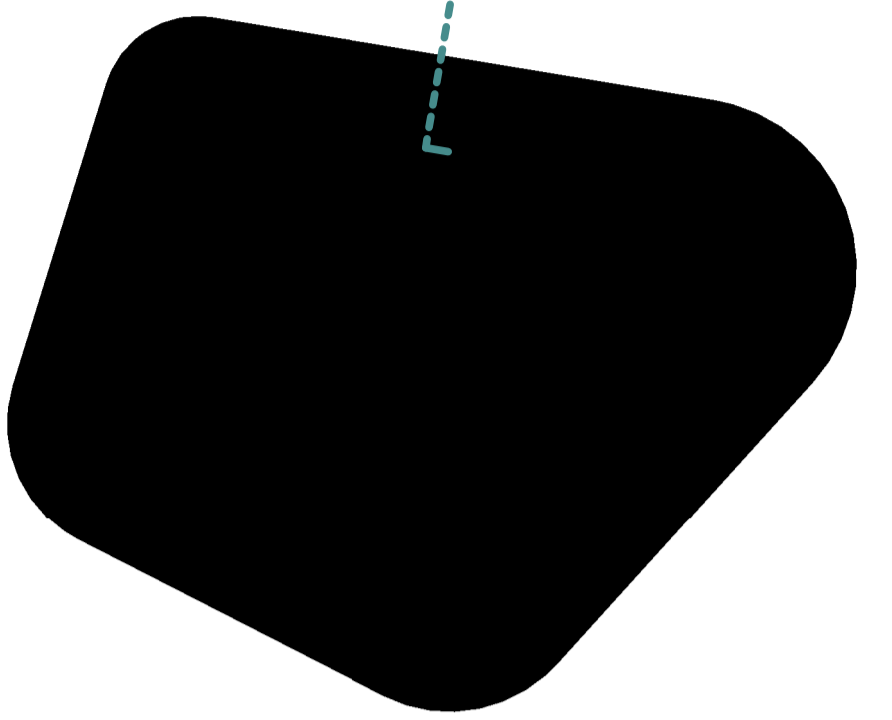
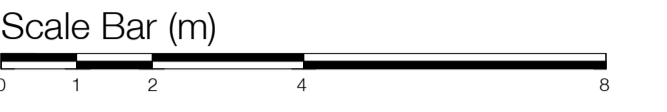


The use of this data by the recipient acts as an agreement of the following statements:
 Do not use this data if you do not agree with any of the following statements:
 All drawings are based upon site information supplied by third parties and as such their accuracy cannot be guaranteed. All features are approximate and subject to clarification by a detailed topographical survey, statutory service enquiries and confirmation of the legal boundaries.
 The controlled version of this drawing should be viewed in DWG or PDF format not DWG or other formats. All points of this drawing must be made in full colour.
 Where this drawing has been based upon Ordnance Survey data, it has been reproduced under the terms of Ryder Licence No. 10000144. Reproduction of this drawing in whole or in part is prohibited without the prior permission of Ordnance Survey.
 Do not scale the drawing. Use figured dimensions in all cases. Check all dimensions on site. Report any discrepancies in writing to Ryder before proceeding.

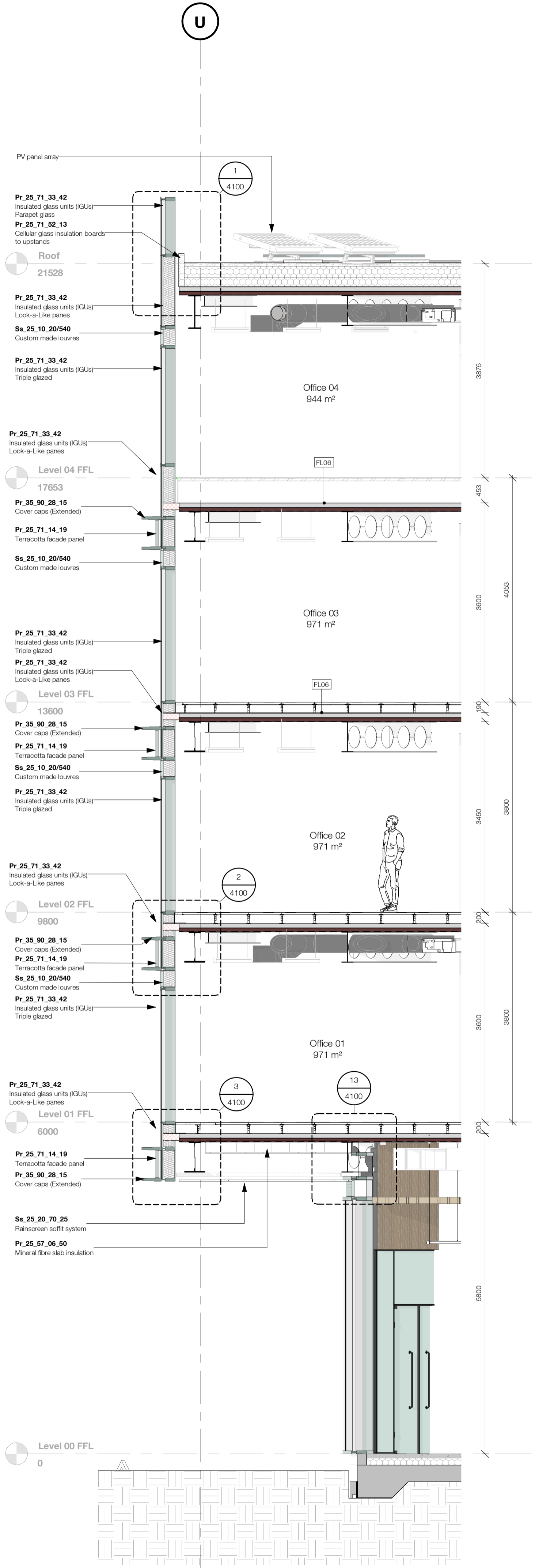


- 1 Ss_25_10_20_85
Stick curtain walling systems
- Ss_25_10_20/285
Structural sealant/ bonded glazing
- 2 Ss_25_10_20_85
Stick curtain walling systems
- 3 Pr_25_71_14_19
Terracotta facade panel
- 4 Ss_25_50_45_45
Louvre screen systems
- 5 Ss_25_60_05
Balustrade and handrail systems
- 6 Main entrance doors to be fully glazed revolving doors with integrated matwell. Door to 3,000mm high. Adjacent pass doors to be outward opening fully glazed power assisted doors operated by PIR with fob access externally and internal release for out of hours use. Manual override linked to fire alarm with fail safe.
- 60 min fire compartment line
- Pr_25_80_81_51
Mineral wool fire-stopping Curtain Walling
- Fire rated partition / internal glazed screen jamb at vertical compartment
- Waterproofing line
Refer to Drawing Series 4110 for waterproofing details
- Fire stop
- Spandrel panel
- Clear glass

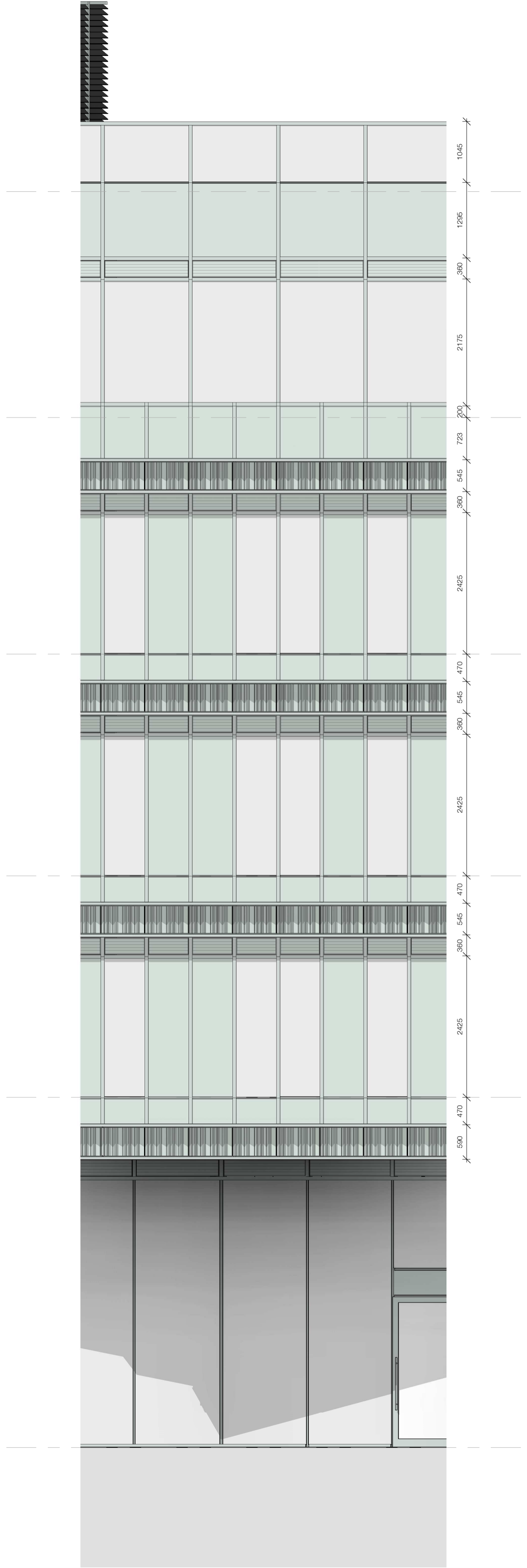
Rev.	Description	Drawn	Checked	Date
P2	Stage 4 Interim cost issue	SCL	FRJ	09/02/21
P1	First Issue	JAY	FRJ	20/11/20

Amendment
 Suitability
 Issued for Costing
Project
 Muse
 Harton Quays
 South Shields
Drawing
 Strip Section A

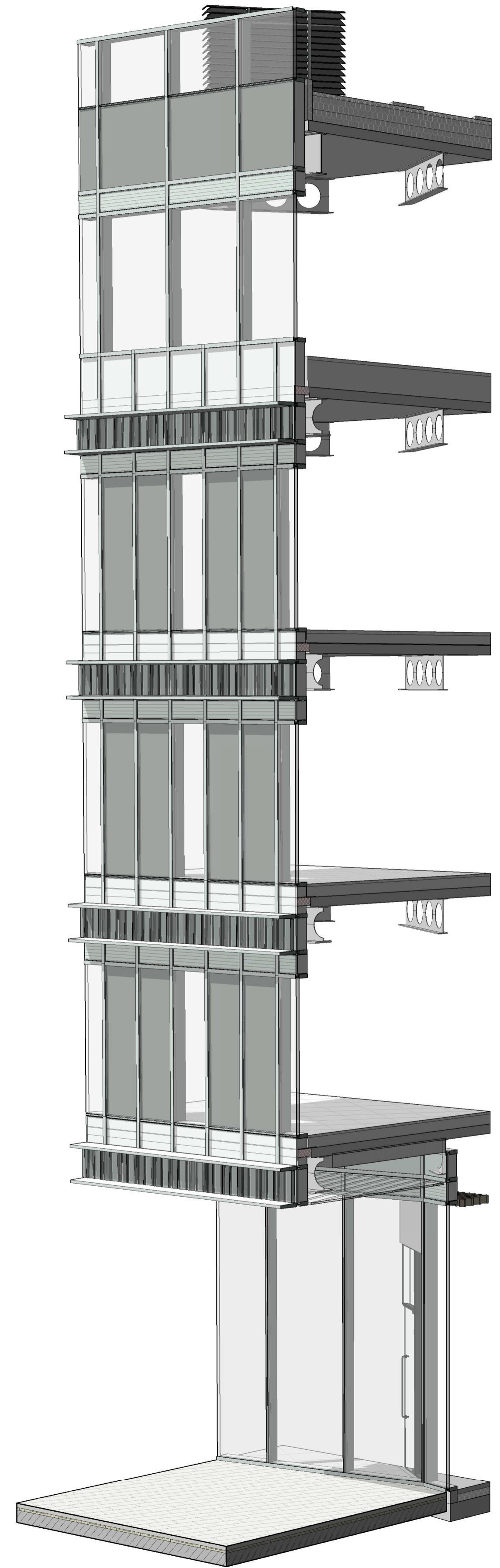
Drawing No.	Project ID	Originator	Zone	Level	Type	Role	Number
HTQ	-	RYD	00	-	ZZ	-	A - 3803
Ryder Project No.	Scale at A1	Status	Revision				
10254-00	As indicated	D1	P2				



1 Strip Section A
 1:50



2 Strip Section A - Elevation
 1:50



3 Strip Section A